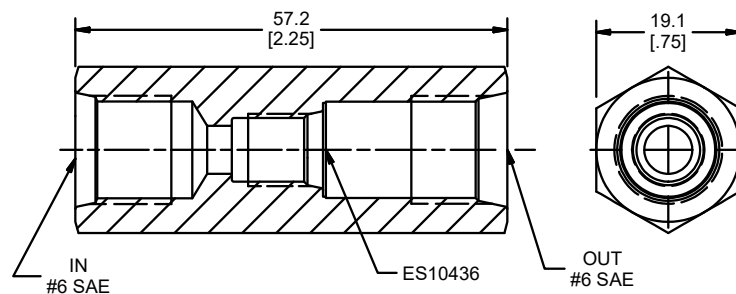
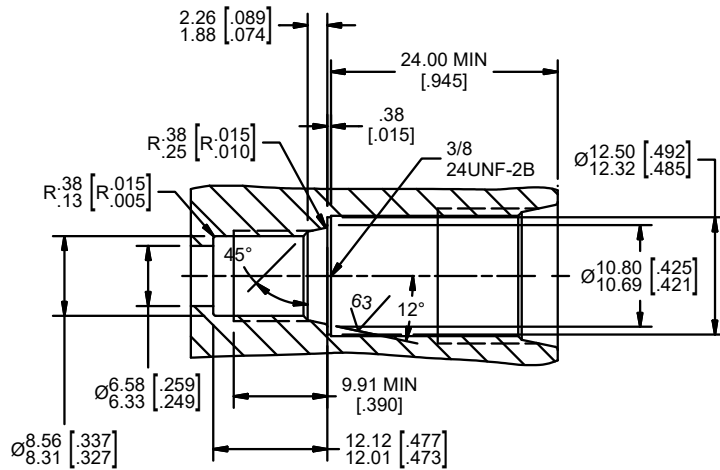


For additional information see Technical Tips on pages BC1-BC2.

Dimensions

Millimeters (Inches)

		VALVE				
		Winner's Circle	Parker	Waterman	FPS	CEC
CAVITY	Winner's Circle					
	Parker		X			
	Waterman					
	FPS					
	CEC					



Ordering Information

LB10436

Line Body Port Size Body Material

Code	Port Size
Omit	SAE - 6

Code	Body Material
S	Steel

Form Tool: Rougher None
 Finisher None
Weight: 0.09 kg (0.2 lbs.)

**Please be advised that this is a non-core line body.
 Additional lead-time and/or pricing requirements may exist when ordering.*

- CV
- Check Valves
- SH
- Shuttle Valves
- LM
- Load/Motor Controls
- FC
- Flow Controls
- PC
- Pressure Controls
- LE
- Logic Elements
- DC
- Directional Controls
- MV
- Manual Valves
- SV
- Solenoid Valves
- PV
- Proportional Valves
- CE
- Coils & Electronics
- CB
- Cartpak Bodies
- BC
- Bodies & Cavities
- TD
- Technical Data